



US009747838B2

(12) **United States Patent**
Kang

(10) **Patent No.:** **US 9,747,838 B2**
(45) **Date of Patent:** **Aug. 29, 2017**

(54) **PIXEL AND ORGANIC LIGHT EMITTING DISPLAY USING THE SAME**

(71) Applicant: **SAMSUNG DISPLAY CO., LTD.**,
Yongin-si, Gyeonggi-do (KR)

(72) Inventor: **Chul-Kyu Kang**, Yongin-si (KR)

(73) Assignee: **SAMSUNG DISPLAY CO., LTD.**,
Yongin, Gyeonggi-Do (KR)

(*) Notice: Subject to any disclaimer, the term of this patent is extended or adjusted under 35 U.S.C. 154(b) by 0 days.

(21) Appl. No.: **15/051,715**

(22) Filed: **Feb. 24, 2016**

(65) **Prior Publication Data**

US 2016/0171927 A1 Jun. 16, 2016

Related U.S. Application Data

(63) Continuation of application No. 13/137,899, filed on Sep. 21, 2011, now Pat. No. 9,275,567.

(30) **Foreign Application Priority Data**

Nov. 5, 2010 (KR) 10-2010-0109850

(51) **Int. Cl.**
G09G 3/325 (2016.01)
G09G 3/00 (2006.01)
(Continued)

(52) **U.S. Cl.**
CPC **G09G 3/325** (2013.01); **G09G 3/003** (2013.01); **G09G 3/3233** (2013.01);
(Continued)

(58) **Field of Classification Search**
CPC ... G09G 2300/0426; G09G 2300/0439; G09G 2300/0809; G09G 2300/0852;
(Continued)

(56) **References Cited**

U.S. PATENT DOCUMENTS

2004/0263060 A1 * 12/2004 Gilmour et al. .. G02F 1/133603 313/501
2005/0269958 A1 * 12/2005 Choi et al. G09G 3/3233 315/169.3

(Continued)

FOREIGN PATENT DOCUMENTS

JP 2008-165166 A 7/2008
JP 2008-249744 A 10/2008

(Continued)

OTHER PUBLICATIONS

Office Action dated Dec. 24, 2014 from related Japanese Application.

(Continued)

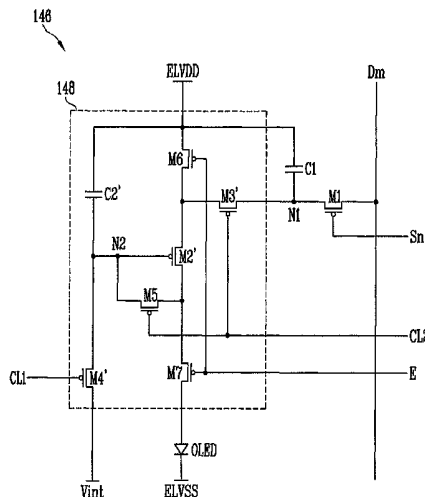
Primary Examiner — Tony Davis

(74) *Attorney, Agent, or Firm* — Lee & Morse P.C.

(57) **ABSTRACT**

A pixel may include an organic light emitting diode (OLED) with a cathode electrode coupled to a second power source, a first transistor with a first electrode coupled to a data line, with a second electrode coupled to a first node, the first transistor being turned on when a scan signal is supplied to a scan line, a first capacitor coupled between the first node and a third power source to charge a first capacitor voltage corresponding to a data signal supplied from the data line, and a pixel circuit charged by the first capacitor voltage to supply current corresponding to a charged first power source voltage from a first power source to the second power source via the OLED.

21 Claims, 8 Drawing Sheets



- (51) **Int. Cl.**
G09G 3/3233 (2016.01)
G09G 3/3266 (2016.01)
- (52) **U.S. Cl.**
 CPC ... *G09G 3/3266* (2013.01); *G09G 2300/0426* (2013.01); *G09G 2300/0439* (2013.01); *G09G 2300/0809* (2013.01); *G09G 2300/0852* (2013.01); *G09G 2300/0861* (2013.01); *G09G 2310/08* (2013.01); *G09G 2330/00* (2013.01)
- (58) **Field of Classification Search**
 CPC *G09G 2300/0861*; *G09G 2310/08*; *G09G 2330/00*; *G09G 3/003*; *G09G 3/3233*; *G09G 3/325*; *G09G 3/3266*
 USPC 345/76-77, 175, 205, 690, 176
 See application file for complete search history.

2008/0211397 A1* 9/2008 Choi G09G 3/3233 313/504
 2009/0167648 A1* 7/2009 Jeon et al. G09G 3/3233 345/76
 2009/0309816 A1* 12/2009 Choi G09G 3/3233 345/76
 2010/0201656 A1* 8/2010 Han et al. G09G 3/3233 345/205
 2010/0220040 A1* 9/2010 Kwak et al. G09G 3/3233 345/76
 2010/0245219 A1 9/2010 Shishido
 2010/0245402 A1* 9/2010 Choi et al. G09G 3/3233 345/690

FOREIGN PATENT DOCUMENTS

JP 2009-216850 A 9/2009
 KR 10-2006-0056791 A 5/2006
 KR 10-2006-0068538 A 6/2006
 KR 10-2007-0083072 A 8/2007
 KR 10 2008-0026278 A 3/2008
 KR 10-0821055 B1 4/2008
 KR 10 2010-0033061 A 3/2010
 KR 10-2010-0107654 A 10/2010
 KR 10-2012-0026984 A 3/2012

(56) **References Cited**

U.S. PATENT DOCUMENTS

2006/0097966 A1* 5/2006 Choi G09G 3/3233 345/77
 2006/0114193 A1* 6/2006 Kwak et al. G09G 3/3233 345/76
 2006/0132053 A1* 6/2006 Cho et al. G09G 3/3233 315/169.3
 2007/0063993 A1* 3/2007 Shishido G09G 3/3241 345/175
 2008/0158114 A1* 7/2008 Kim G09G 3/3233 345/77

OTHER PUBLICATIONS

Korean Office Action issued from the Korean Intellectual Property Office on Jan. 6, 2017 with respect to Korean Patent Application No. 10-2010-0109850.

* cited by examiner

FIG. 1

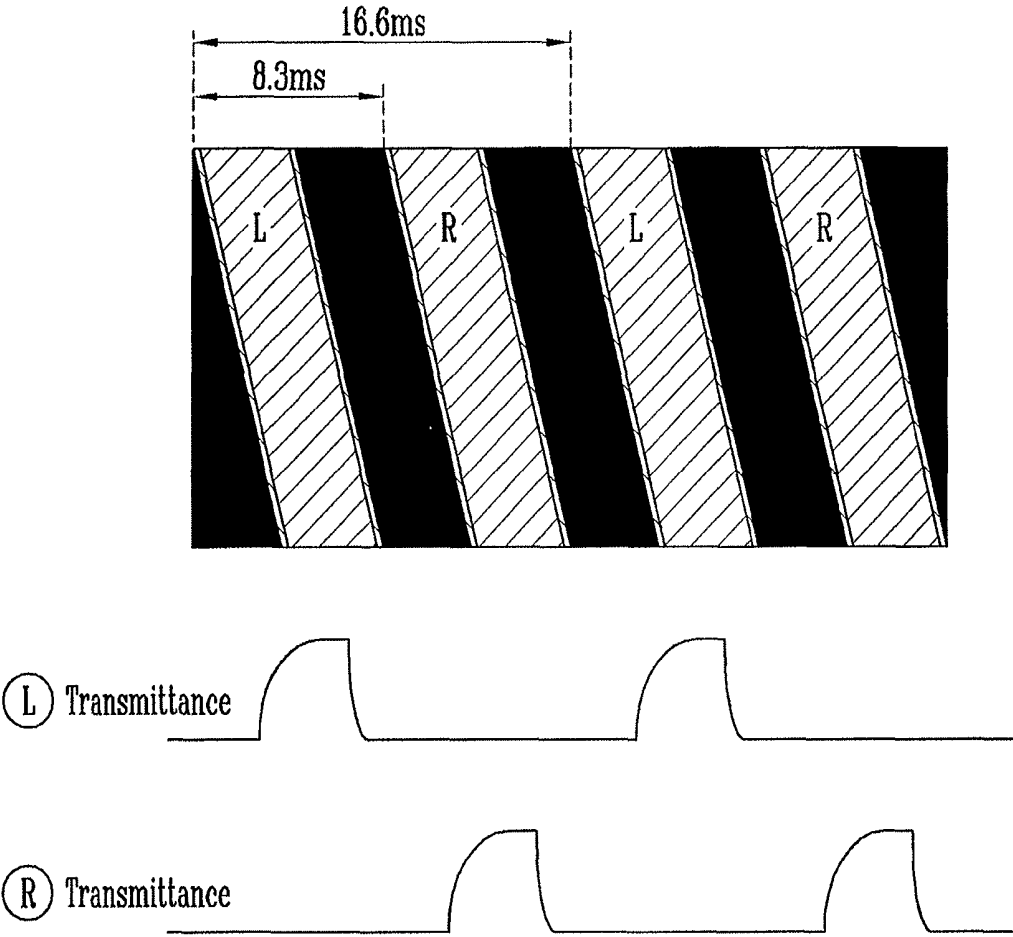


FIG. 2

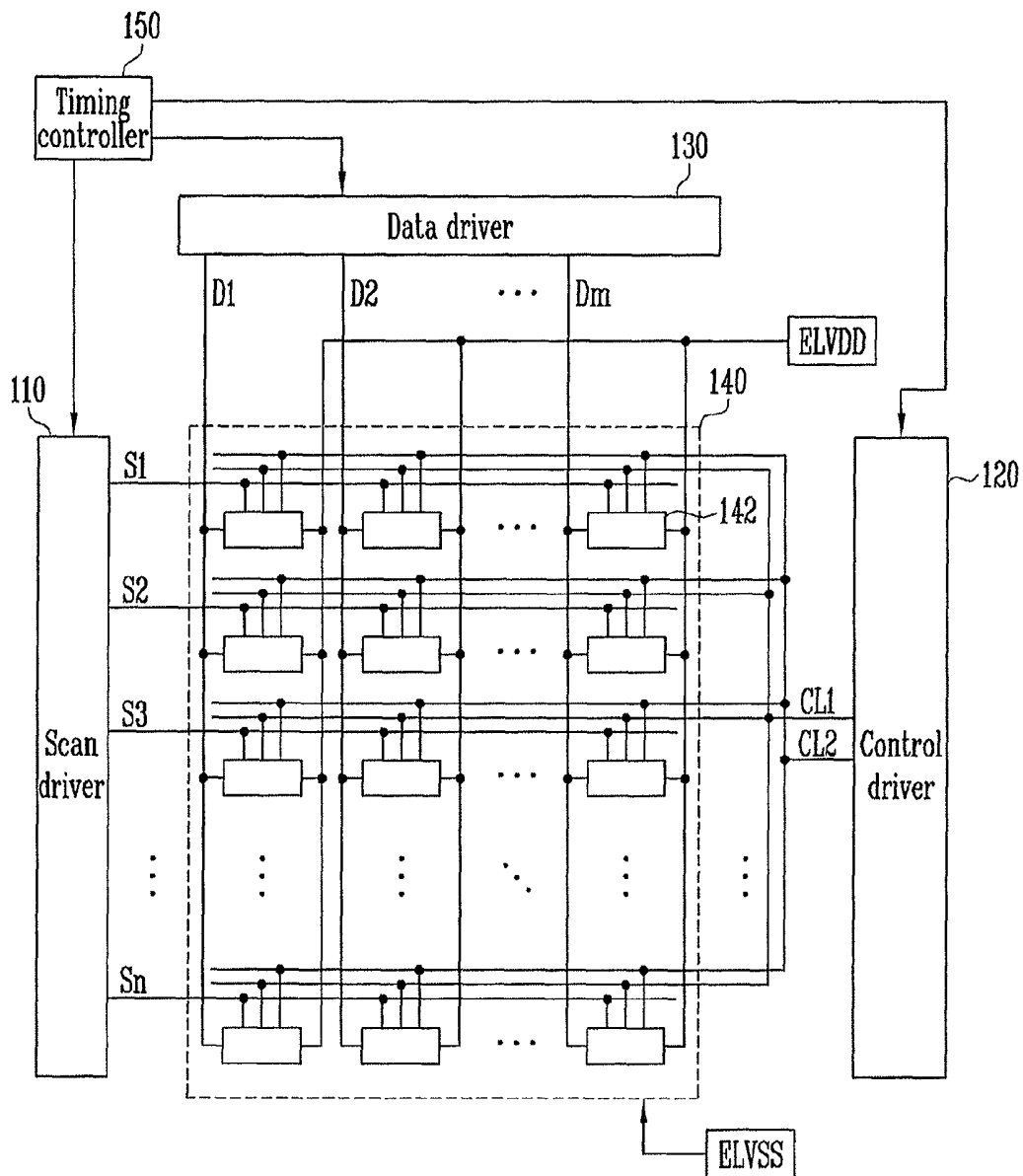


FIG. 3A

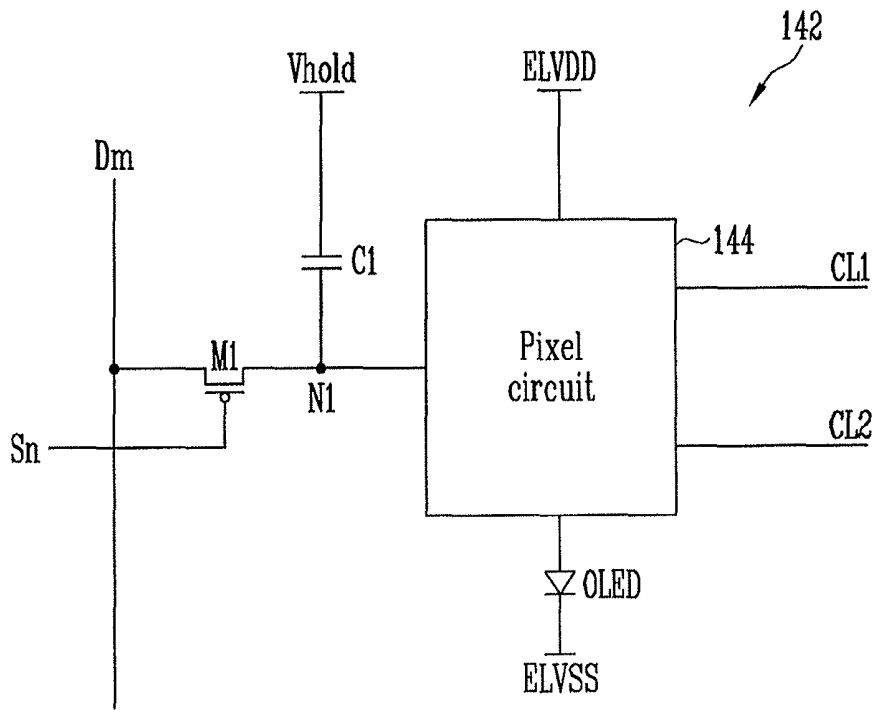


FIG. 3B

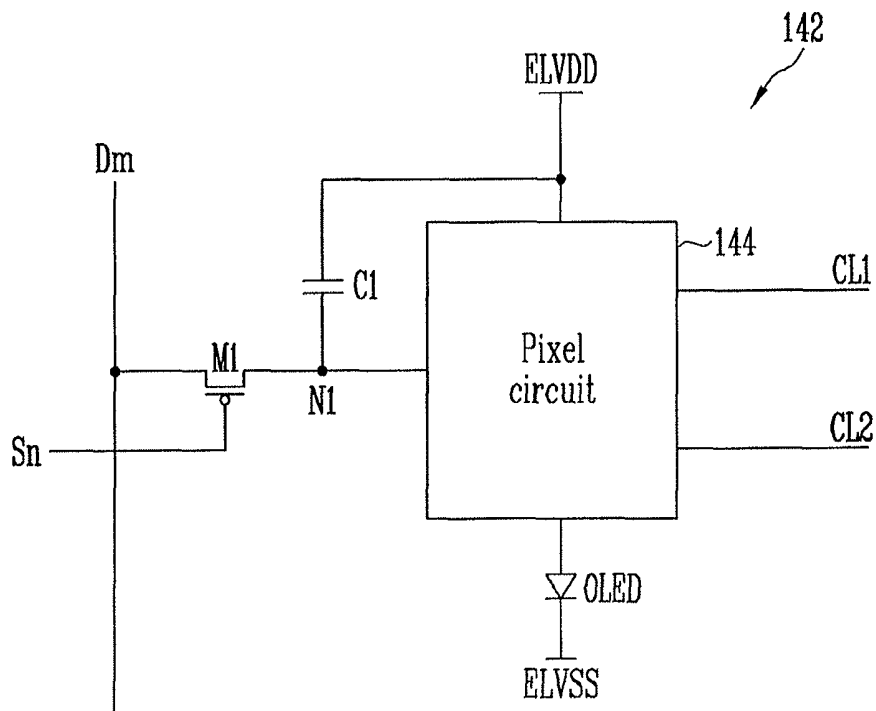


FIG. 4

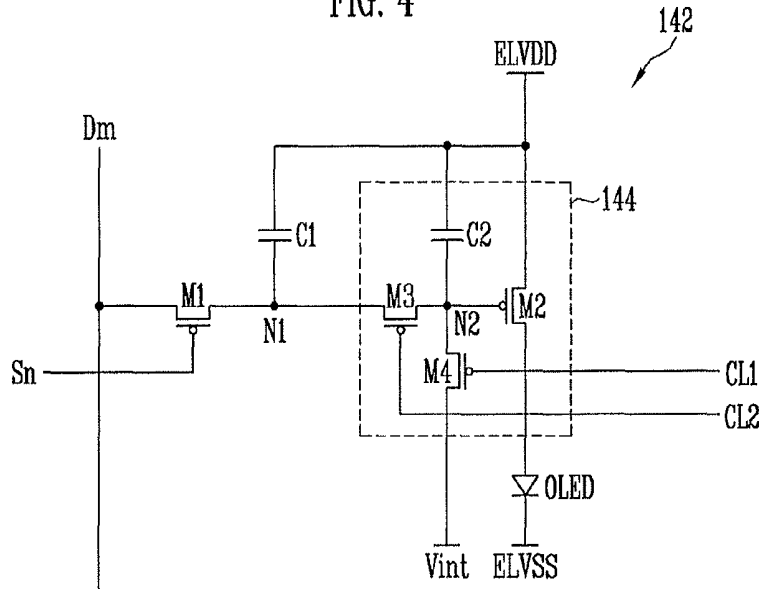


FIG. 5

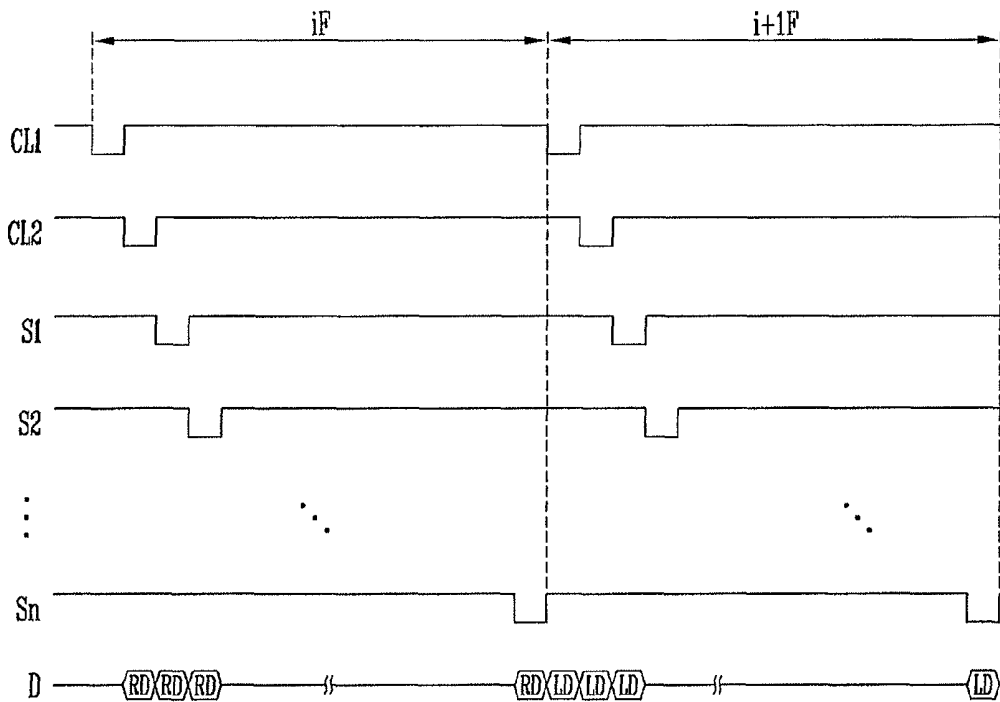


FIG. 6

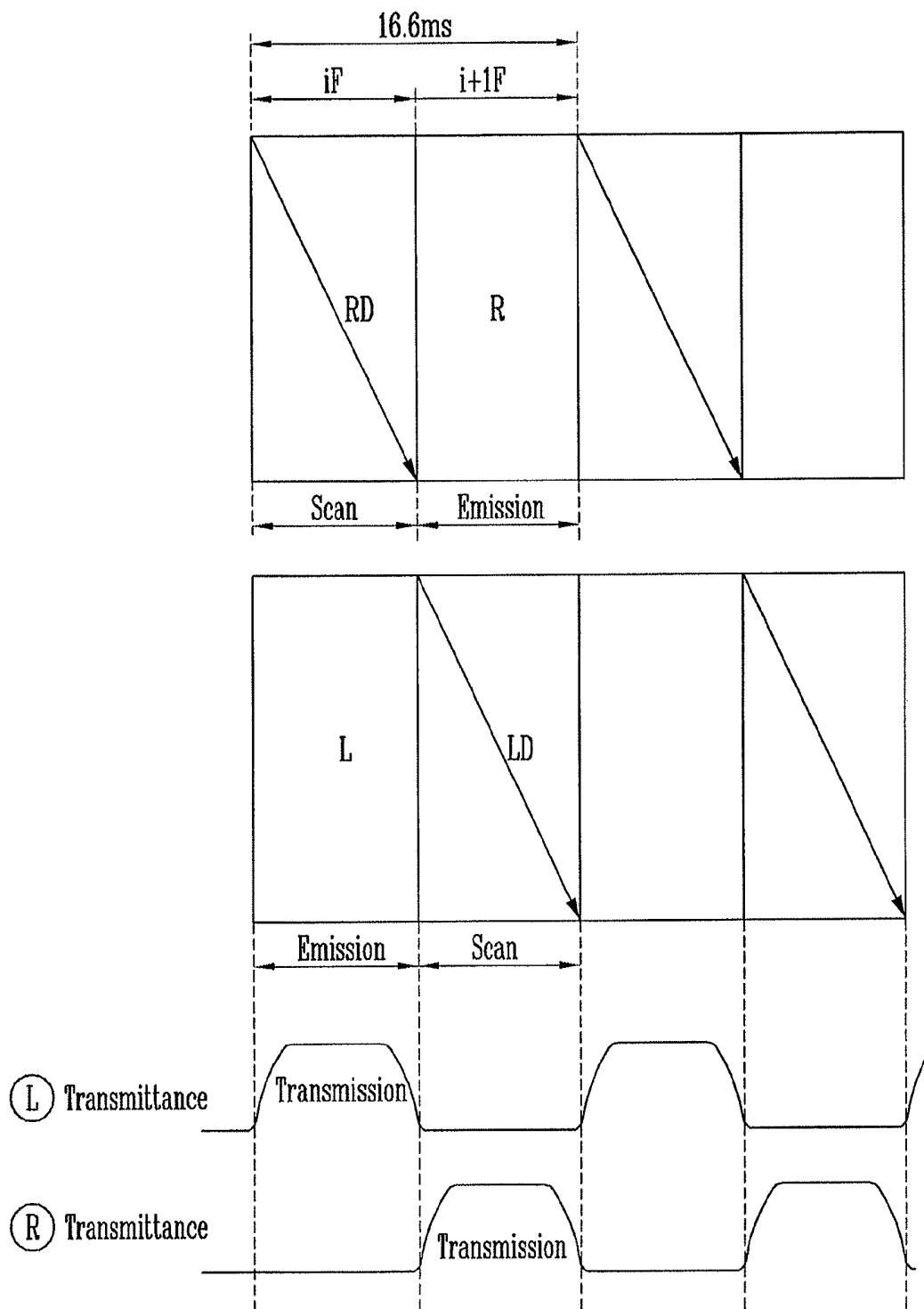


FIG. 7

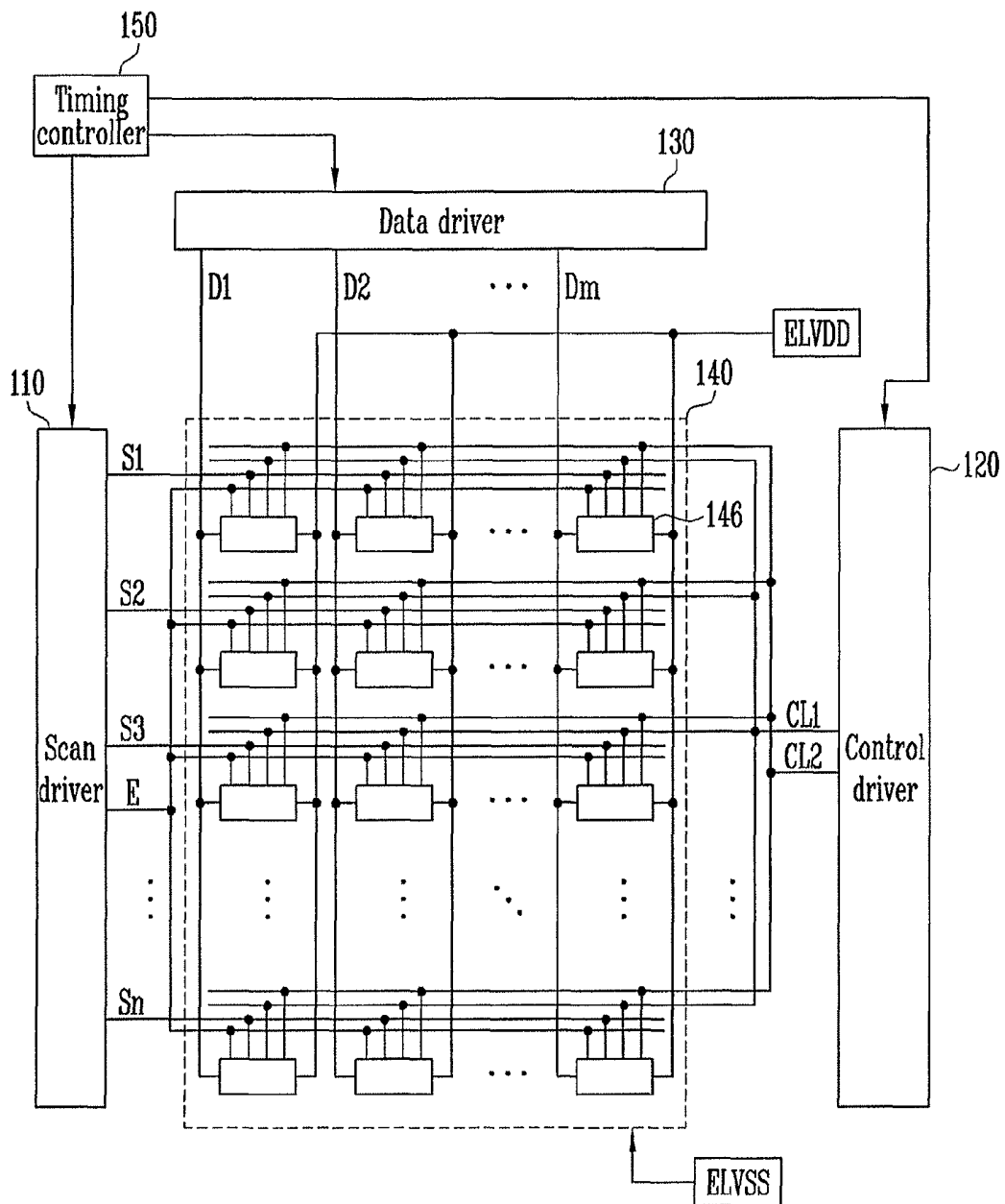
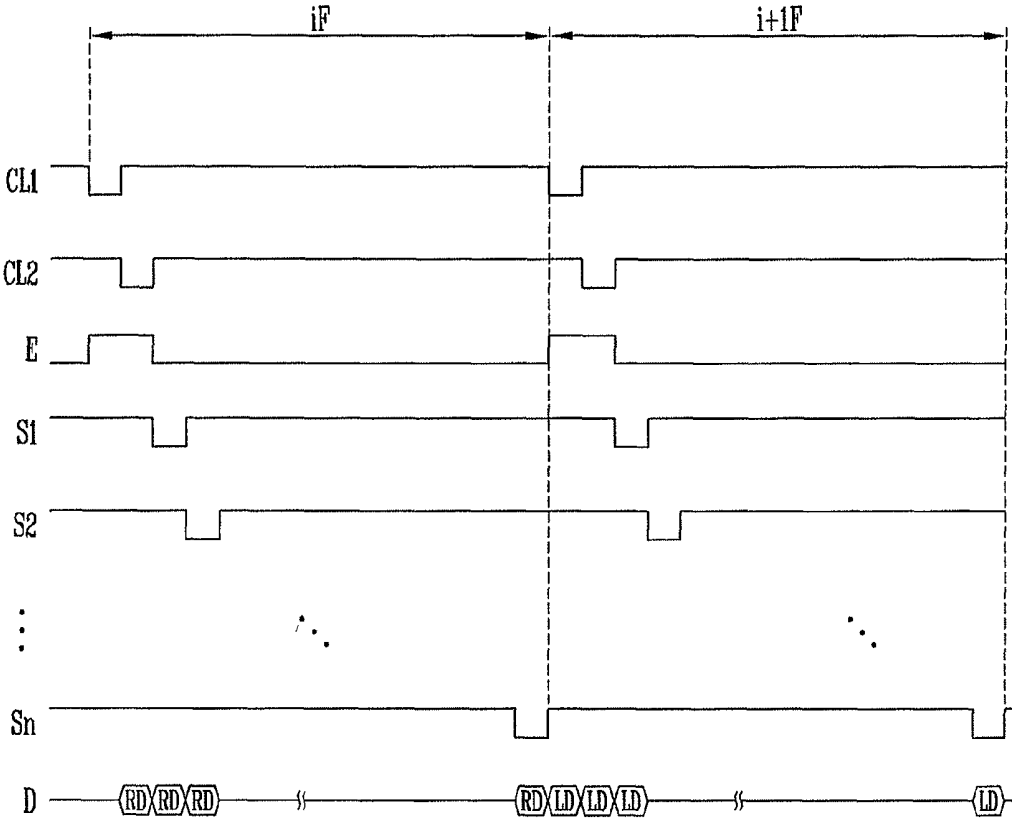


FIG. 9



PIXEL AND ORGANIC LIGHT EMITTING DISPLAY USING THE SAME

CROSS-REFERENCE TO RELATED APPLICATIONS

This is a divisional application based on pending application Ser. No. 13/137,899, filed Sep. 21, 2011, the entire contents of which is hereby incorporated by reference.

This application claims priority to and the benefit of Korean Patent Application No. 10-2010-0109850, filed on Nov. 5, 2010, in the Korean Intellectual Property Office, the entire content of which is incorporated herein by reference.

BACKGROUND

1. Field

Embodiments relate to a pixel capable of being driven at a low driving frequency and an organic light emitting display using the same.

2. Description of the Related Art

Recently, various flat panel displays (FPD) capable of reducing weight and volume have been developed. Weight and volume are disadvantages of cathode ray tubes (CRT). The FPDs include liquid crystal displays (LCD), field emission displays (FED), plasma display panels (PDP), and organic light emitting displays.

The organic light emitting displays display images using organic light emitting diodes (OLED) that generate light by re-combination of electrons and holes. The organic light emitting display has high response speed and is driven with low power consumption.

The organic light emitting display includes a plurality of data lines, scan lines, and a plurality of pixels arranged in a matrix at intersections of power lines. Each pixel includes an organic light emitting diode, at least two transistors including a drive transistor, and at least one capacitor.

The organic light emitting display includes four frames in a period of 16.6 ms as illustrated in FIG. 1 in order to realize a 3D image. Among the four frames, a first frame displays a left image and a third frame displays a right image. A second frame and a fourth frame display a black image.

SUMMARY

Embodiments are directed to a pixel and an organic light emitting display using the same.

An embodiment may include a pixel, including an organic light emitting diode (OLED) with a cathode electrode coupled to a second power source, a first transistor with a first electrode coupled to a data line, with a second electrode coupled to a first node, the first transistor being turned on when a scan signal is supplied to a scan line, a first capacitor coupled between the first node and a third power source to charge a first capacitor voltage corresponding to a data signal supplied from the data line, and a pixel circuit charged by the first capacitor voltage, the pixel circuit controls current from a first power source to the second power source via the OLED.

Another embodiment may include pixels positioned at intersections of scan lines and data lines, a scan driver for sequentially supplying scan signals to the scan lines, a data driver for supplying data signals to the data lines in synchronization with the scan signals, a first control line and a second control line commonly coupled to the pixels, and a control driver for sequentially supplying a first control signal to the first control line and a second control signal to the

second control line in a stage before the scan signals are supplied to the scan lines in frames. Among the pixels, a pixel positioned in a jth horizontal line includes a first capacitor for charging a data signal voltage corresponding to the data signal when, among the scan signals, a scan signal is supplied to a jth scan line and a second capacitor for charging a first capacitor voltage corresponding to the voltage charged in the first capacitor when the second control signal is supplied to the second control line.

BRIEF DESCRIPTION OF THE DRAWINGS

The above and other features will become more apparent to those of ordinary skill in the art by describing in detail exemplary embodiments with reference to the attached drawings, in which:

FIG. 1 illustrates frames for 3D driving;

FIG. 2 illustrates a view of an organic light emitting display according to a first embodiment;

FIGS. 3A and 3B illustrate views of an embodiment of a pixel of FIG. 2;

FIG. 4 illustrates a view of an embodiment of the pixel circuit of FIGS. 3A and 3B;

FIG. 5 illustrates a waveform chart of a method of driving the pixel of FIG. 4;

FIG. 6 illustrates a view of frames according to present embodiments for 3D driving;

FIG. 7 illustrates a view of an organic light emitting display according to another embodiment;

FIG. 8 illustrates a view of an embodiment of the pixel of FIG. 7; and

FIG. 9 illustrates a waveform chart of a method of driving the pixel of FIG. 8.

DETAILED DESCRIPTION

Korean Patent Application No. 10-2010-0109850, filed on Nov. 5, 2010, in the Korean Intellectual Property Office, and entitled: "Pixel and Organic Light Emitting Display Device" is incorporated by reference herein in its entirety.

Example embodiments will now be described more fully hereinafter with reference to the accompanying drawings; however, they may be embodied in different forms and should not be construed as limited to the embodiments set forth herein.

Hereinafter, exemplary embodiments, by which those who skilled in the art may easily perform, will be described in detail with reference to FIGS. 2 to 9.

FIG. 2 is a view illustrating an organic light emitting display according to a first embodiment.

Referring to FIG. 2, the organic light emitting display according to the first embodiment includes a pixel unit 140 including pixels 142 positioned at the intersections of scan lines S1 to Sn, first control lines CL1, second control lines CL2, and data lines D1 to Dm, a scan driver 110 for driving the scan lines S1 to Sn, a control driver 120 for driving the first control lines CL1 and the second control lines CL2, a data driver 130 for driving the data lines D1 to Dm, and a timing controller 150 for controlling the drivers 110, 120, and 130.

The scan driver 110 sequentially supplies scan signals to the scan lines S1 to Sn every frame. When the scan signals are supplied to the scan lines S1 to Sn, the pixels 142 are selected in units of horizontal lines.

The data driver 130 supplies data signals to the data lines D1 to Dm in synchronization with the scan signals. Then, the data signals are supplied to the pixels 142 selected by the

scan signals. The data driver **130** alternately supplies left data signals and right data signals every frame. For example, the data driver **130** supplies the right data signals in i th (i is a natural number) frames iF and supplies the left data signals in $(i+1)$ th frames $(i+1)F$. The right data signals mean the signals corresponding to the right side of the shutter glasses and the left data signals mean the signals corresponding to the left side of the shutter glasses.

The control driver **120** supplies a first control signal and a second control signal to the first control lines **CL1** and the second control lines **CL2** commonly coupled to the pixels **142**. The first control signal and the second control signal are supplied at the early stage of each of the frames, i.e., before the scan signals are supplied to the scan lines **S1** to **Sn**.

The pixels **142** are positioned at the intersections of the scan lines **S1** to **Sn**, the first control lines **CL1**, the second control lines **CL2**, and the data lines **D1** to **Dm**. The pixels **142** charge the right data signals to correspond to the scan signals supplied to the scan lines **S1** to **Sn** in the i th frames. The pixels **142** simultaneously emit light components corresponding to the left data signals in the i th frames where the right data signals are charged. In addition, the pixels **142** charge the left data signals to correspond to the scan signals supplied to the scan lines **S1** to **Sn** in the $(i+1)$ th frames. The pixels **142** simultaneously emit light components corresponding to the right data signals in the $(i+1)$ th frames where the left data signals are charged.

FIGS. **3A** and **3B** are views illustrating an embodiment of the pixel of FIG. **2**. In FIGS. **3A** and **3B**, the pixel coupled to the m th data line **Dm** and the n th scan line **Sn** will be illustrated.

Referring to FIG. **3A**, the pixel **142** according to the embodiment includes a first transistor **M1**, a first capacitor **C1**, a pixel circuit **144**, and an organic light emitting diode (OLED).

The anode electrode of the OLED is coupled to the pixel circuit **144** and the cathode electrode of the OLED is coupled to a second power source **ELVSS**. The OLED generates light with predetermined brightness to correspond to the amount of current supplied from the pixel circuit **144**.

The first electrode of the first transistor **M1** is coupled to the data line **Dm** and the second electrode of the first transistor **M1** is coupled to a first node **N1** coupled to the pixel circuit **144**. Then, the gate electrode of the first transistor **M1** is coupled to the scan line **Sn**. The first transistor **M1** is turned on when a scan signal is supplied to the scan line **Sn**.

The first capacitor **C1** is coupled between the first node **N1** and a third power source **Vhold**. The first capacitor **C1** charges the voltage corresponding to the data signal supplied from the data line **Dm** when the first transistor **M1** is turned on. The third power source **Vhold** may be set as a fixed power source (i.e., a direct current power source) at a predetermined voltage.

The third power source **Vhold** is set to have the same voltage as a first power source **ELVDD** and may be coupled to the first capacitor **C1** through an additional line. In addition, the third power source **Vhold** may be selected as the first power source **ELVDD** as illustrated in FIG. **3B** and may be selected as one of the various types of power sources (i.e., the initial power source **Vint** of FIG. **4**) supplied to the pixel. For convenience, it is assumed that the third power source **Vhold** is selected as the first power source **ELVDD**.

The pixel circuit **144** is initialized when the first control signal is supplied to the first control lines **CL1** and charges a predetermined voltage to correspond to the voltage charged in the first capacitor **C1** when the second control

signal is supplied to the second control lines **CL2**. The pixel circuit **144** that charges a predetermined voltage controls the amount of current supplied to the OLED to correspond to the voltage charged therein. The pixel circuit **144** may be realized by well-known types of various circuits.

FIG. **4** is a view illustrating an embodiment of the pixel circuit of FIG. **3**.

Referring to FIG. **4**, the pixel circuit **144** includes a second transistor **M2**, a third transistor **M3**, a fourth transistor **M4**, and a second capacitor **C2**.

The first electrode of the second transistor **M2** is coupled to the first power source **ELVDD**, the second electrode of the second transistor **M2** is coupled to the anode electrode of the OLED, and the gate electrode of the second transistor **M2** is coupled to a second node **N2**. The second transistor **M2** supplies the current corresponding to the voltage applied to the second node **N2** from the first power source **ELVDD** to the second power source **ELVSS** via the OLED.

The first electrode of the third transistor **M3** is coupled to the first node **N1** and the second electrode of the third transistor **M3** is coupled to the second node **N2**. Then, the gate electrode of the third transistor **M3** is coupled to the second control line **CL2**. The third transistor **M3** is turned on when the second control signal is supplied to the second control line **CL2** to electrically couple the first node **N1** to the second node **N2**.

The first electrode of the fourth transistor **M4** is coupled to the second node **N2** and the second electrode of the fourth transistor **M4** is coupled to the initial power source **Vint**. Then, the gate electrode of the fourth transistor **M4** is coupled to the first control line **CL1**. The fourth transistor **M4** is turned on when the first control signal is supplied to the first control line **CL1** to supply the voltage of the initial power source **Vint** to the second node **N2**. The initial power source **Vint** is set to have a lower voltage than the data signal so that the second node **N2** is initialized by the voltage of the initial power source **Vint** when the fourth transistor **M4** is turned on.

The second capacitor **C2** is coupled between the second node **N2** and the first power source **ELVDD**. The second capacitor **C2** is charged to correspond to the voltage supplied from the first capacitor **C1** when the third transistor **M3** is turned on.

FIG. **5** is a waveform chart illustrating a method of driving the pixel of FIG. **4**. FIG. **6** is a view illustrating frames according to present embodiments for 3D driving.

Referring to FIGS. **5** and **6**, the first control signal is supplied to the first control line **CL1** at the early stage of the i th frame iF . When the first control signal is supplied, the fourth transistor **M4** is turned on so that the voltage of the initial power source **Vint** is supplied to the second node **N2**. When the first control signal is supplied to the first control line **CL1**, the second node **N2** of each of the pixels **142** is set to have the voltage of the initial power source **Vint**. When the second node **N2** of each of the pixels **142** is set to have the voltage of the initial power source **Vint** before the data signal is supplied, an image with uniform brightness may be displayed.

After the voltage of the initial power source **Vint** is supplied to the second node **N2**, the second control signal is supplied to the second control line **CL2** so that the third transistor **M3** is turned on. When the third transistor **M3** is turned on, the voltage corresponding to the left data signal **LD** charged in the first capacitor **C1** in an $(i-1)$ th frame $(i-1)F$ is supplied to the second node so that the second capacitor **C2** charges the voltage corresponding to the left data signal **LD**.

The voltage charged in the second capacitor C2 is determined by the coupling of the first capacitor C1 and the second capacitor C2. Therefore, only the partial voltage charged in the first capacitor C1 is charged in the second capacitor C2 so that an image with desired brightness may not be displayed. Therefore, according to present embodiments, the voltage of the data signal is set considering the coupling of the first capacitor C1 and the second capacitor C2. Then, a higher voltage than a desired voltage is charged in the first capacitor C1 and the desired voltage is charged in the second capacitor C2 that receives the voltage from the first capacitor C1. In addition, according to present embodiments, the first capacitor C1 has a larger capacity than the second capacitor C2 so that the voltage may be stably charged in the second capacitor C2.

After a predetermined voltage is charged in the second capacitor C2, the second transistor M2 supplies the current corresponding to the voltage charged in the second capacitor C2 to the OLED. At this time, the OLED generates light with predetermined brightness to correspond to the amount of current supplied thereto. The amount of current supplied to the OLED in the *i*th frame *iF* is determined to correspond to the left data signal LD supplied in the (*i*-1)th frame *i*-1F.

In the period where the OLED of each of the pixels 142 emits light, scan signals are sequentially supplied to the first scan signal to the *n*th scan signal *S_n*. The right data signal RD is supplied to the data lines D1 to D_{*m*} in synchronization with the scan signals.

When a scan signal is supplied to the *n*th scan line *S_n*, the first transistor M1 is turned on. When the first transistor M1 is turned on, the right data signal RD from the data line D_{*m*} is supplied to the first node N1. At this time, the first capacitor C1 charges the voltage corresponding to the right data signal.

The OLED emits light to correspond to the left data signal LD supplied to the (*i*-1)th frame *i*-1F in the *i*th frame *iF* and the first capacitor C1 charges the voltage corresponding to the right data signal RD supplied in the *i*th frame *iF*.

The first control signal is supplied to the first control line CL1 in the (*i*+1)th frame *i*+1F so that the second node N2 included in each of the pixels 142 is set to have the voltage of the initial power source *V_{int}*. Then, the second control signal is supplied to the second control line CL2 so that the third transistor M3 included in each of the pixels is turned on. When the third transistor M3 is turned on, the second capacitor C2 charges the voltage corresponding to the voltage supplied from the first capacitor *c*1.

After a predetermined voltage is charged in the second capacitor C2, the second transistor M2 supplies the current corresponding to the voltage charged in the second capacitor C2 to the OLED. At this time, the OLED generates light with predetermined brightness to correspond to the amount of current supplied thereto. The amount of current supplied to the OLED in the (*i*+1)th frame *i*+1F is determined to correspond to the right data signal RD supplied in the *i*th frame *iF*.

While the scan signals are sequentially supplied to the first scan line S1 to the *n*th scan line *S_n*, the first transistor M1 included in each of the pixels 142 is turned on in units of horizontal lines. At this time, the left data signals LD are supplied to the data lines D1 to D_{*m*} in synchronization with the scan signals. Therefore, the voltage corresponding to the left data signal LD is charged in the first capacitor C1 included in each of the pixels 142 in the (*i*+1)th frame *i*+1F.

As described above, according to present embodiments, the pixels 142 alternately generate light components corresponding to the left and right data signals in the frames.

While the pixels 142 generate light components corresponding to the left (or right) data signals, the voltages corresponding to the right (or left) data signals are charged. While the pixels 142 according to present embodiments emit light, the voltages corresponding to the data signals are charged so that the left images and the right images may be alternately generated every frame. In this case, according to present embodiments, as illustrated in FIG. 6, a 3D image may be realized at the driving frequency of 120 Hz.

FIG. 7 is a view illustrating an organic light emitting display according to a second embodiment. When FIG. 7 is described, the same elements as those of FIG. 2 are denoted by the same reference numerals and detailed description thereof will be omitted.

Referring to FIG. 7, the organic light emitting display according to the second embodiment further includes an emission control line E to be commonly coupled to the pixels 146. The emission control line E receives the emission control signal from the scan driver 110 to transmit the emission control signal to the pixels 146.

In the organic light emitting display according to the second embodiment, the emission control line E is added to the circuit structure of the pixels 146 and the other structures are the same those of FIG. 2.

FIG. 8 is a view illustrating an embodiment of the pixel of FIG. 7. When FIG. 8 is described, the same elements as those of FIG. 4 are denoted by the same reference numerals and detailed description thereof will be omitted.

Referring to FIG. 8, a pixel circuit 148 includes second to seventh transistors M2' to M7 and a second capacitor C2'.

The first electrode of the second transistor M2' is coupled to the second electrode of the sixth transistor M6 and the second electrode of the second transistor M2' is coupled to the first electrode of the seventh transistor M7. Then, the gate electrode of the second transistor M2' is coupled to the second node N2. The second transistor M2' supplies the current corresponding to the voltage applied to the second node N2 from the first power source ELVDD to the second power source ELVSS via the OLED.

The first electrode of the third transistor M3' is coupled to the first node N1 and the second electrode of the third transistor M3' is coupled to the first electrode of the second transistor M2'. The gate electrode of the third transistor M3' is coupled to the second control line CL2. The third transistor M3' is turned on when the second control signal is supplied to the second control line CL2 to electrically couple the first node N1 to the first electrode of the second transistor M2'.

The first electrode of the fourth transistor M4' is coupled to the second node N2 and the second electrode of the fourth transistor M4' is coupled to the initial power source *V_{int}*. Then, the gate electrode of the fourth transistor M4' is coupled to the first control line CL1. The fourth transistor M4' is turned on when the first control signal is supplied to the first control line CL1 to supply the voltage of the initial power source *V_{int}* to the second node N2.

The first electrode of the fifth transistor M5 is coupled to the second electrode of the second transistor M2' and the first electrode of the fifth transistor M5 is coupled to the second node N2. The gate electrode of the fifth transistor M5 is coupled to the second control line CL2. The fifth transistor M5 is turned on when the second control signal is supplied to the second control line CL2 to couple the second transistor M2' in the form of a diode.

The first electrode of the sixth transistor M6 is coupled to the first power source ELVDD and the second electrode of the sixth transistor M6 is coupled to the first electrode of the

second transistor M2'. The gate electrode of the sixth transistor M6 is coupled to the emission control line E. The sixth transistor M6 is turned off when the emission control signal is supplied to the emission control line E and is turned on when the emission control signal is not supplied.

The first electrode of the seventh transistor M7 is coupled to the second electrode of the second transistor M2' and the second electrode of the seventh transistor M7 is coupled to the anode electrode of the OLED. The gate electrode of the seventh transistor M7 is coupled to the emission control line E. The seventh transistor M7 is turned off when the emission control signal is supplied to the emission control line E and is turned on when the emission control signal is not supplied to the emission control line E.

The second capacitor C2' is coupled between the second node N2 and the first power source ELVDD. The second capacitor C2' is charged to correspond to the voltage supplied from the first capacitor C1 when the third transistor M3' and the fifth transistor M5' are turned on.

FIG. 9 is a waveform chart illustrating a method of driving the pixel of FIG. 8.

Referring to FIG. 9, the first control signal and the second control signal are sequentially supplied to the first control line CL1 and the second control line CL2 at the early stage of the *i*th frame *i*F. Then, the emission control signal is supplied to the emission control line E to overlap the first control signal and the second control signal.

When the emission control signal is supplied to the emission control line E, the sixth transistor M6 and the seventh transistor M7 are turned off. When the sixth transistor M6 is turned off, the first power source ELVDD and the second transistor M2' are electrically blocked. When the seventh transistor M7 is turned off, the second power source ELVSS and the second transistor M2' are electrically blocked.

When the first control signal is supplied to the first control line CL1, the fourth transistor M4' is turned on. When the fourth transistor M4' is turned on, the voltage of the initial power source Vint is supplied to the second node N2.

After the voltage of the initial power source Vint is supplied to the second node N2, the second control signal is supplied to the second control line CL2 so that the third transistor M3' and the fifth transistor M5' are turned on. When the third transistor M3' is turned on, the voltage corresponding to the left data signal LD charged in the first capacitor C1 in the (*i*-1)th frame *i*-1F is supplied to the first electrode of the second transistor M2'.

At this time, since the second node N2 is initialized to the voltage of the initial power source Vint lower than the data signals, the second transistor M2' coupled in the form of a diode is turned on. When the second transistor M2' is turned on, the voltage obtained by subtracting the threshold voltage of the second transistor M2' from the voltage applied to the first electrode of the second transistor M2' is supplied to the second node N2. At this time, the second capacitor C2' charges the voltage corresponding to the voltage applied to the second node N2. The second capacitor C2' charges the voltages corresponding to the left data signal LD supplied in the (*i*-1)th frame *i*-1F and the threshold voltage of the second transistor M2'.

After the voltages are charged in the second capacitor C2', the supply of the emission control signal to the emission control line E is stopped. For example, the supply of the emission control signal to the emission control line E is stopped before a scan signal is supplied to the first scan line S1. When the supply of the emission control signal to the

emission control line E is stopped, the sixth transistor M6 and the seventh transistor M7 are turned on.

When the sixth transistor M6 is turned on, the first power source ELVDD and the first electrode of the second transistor M2' are electrically coupled to each other. When the seventh transistor M7 is turned on, the second electrode of the second transistor M2' and the anode electrode of the OLED are electrically coupled to each other. At this time, the second transistor M2' controls the amount of current that flows from the first power source ELVDD to the second power source ELVSS via the OLED to correspond to the voltage applied to the second node N2. That is, in the *i*th frame *i*F, the pixels 142 emit light to correspond to the left data signal LD supplied in the (*i*-1)th frame *i*-1F.

The scan signals are sequentially supplied to the first scan line S1 to the *n*th scan line Sn. Then, the right data signals RD are supplied to the data lines D1 to Dm in synchronization with the scan signals. When the scan signals are sequentially supplied to the scan lines S1 to Sn, the first transistors M1 included in the pixels 146 in units of horizontal lines are turned on. At this time, the right data signals RD from the data lines D1 to Dm are supplied to the first nodes N1 via the first transistors M1. Then, the voltages corresponding to the right data signals RD are charged in the first capacitors C1 included in the pixels 146.

In the (*i*+1)th frame *i*+1F, the first control signal and the second control signal are sequentially supplied to the first control line CL1 and the second control line CL2. Then, the emission control signal is supplied to the emission control line E to overlap the first control signal and the second control signal.

When the emission control signal is supplied to the emission control line E, the sixth transistor M6 and the seventh transistor M7 are turned off. When the first control signal is supplied to the first control line CL1, the fourth transistor M4' is turned on so that the voltage of the initial power source Vint is supplied to the second node N2.

After the voltage of the initial power source Vint is supplied to the second node N2, the second control signal is supplied to the second control line CL2 so that the third transistor M3' and the fifth transistor M5' are turned on. When the third transistor M3' and the fifth transistor M5' are turned on, the voltage obtained by subtracting the threshold voltage of the second transistor M2' from the voltage applied to the first electrode of the second transistor M2' is supplied to the second node N2. At this time, the second capacitor C2' charges the voltages corresponding to the right data signal RD supplied in the *i*th frame *i*F and the threshold voltage of the second transistor M2'.

After the voltages of the second capacitor C2' are charged, the supply of the emission control signal to the emission control line E is stopped so that the sixth transistor M6 and the seventh transistor M7 are turned on. When the sixth transistor M6 is turned on, the first power source ELVDD and the first electrode of the second transistor M2' are electrically coupled to each other. When the seventh transistor M7 is turned on, the second electrode of the second transistor M2' and the anode electrode of the OLED are electrically coupled to each other. At this time, the second transistor M2' controls the amount of current that flows from the first power source ELVDD to the second power source ELVSS via the OLED to correspond to the voltage applied to the second node N2. In the (*i*+1)th frame *i*+1F, the pixels 142 emit light to correspond to the right data signals RD supplied in the *i*th frame *i*F.

The scan signals are sequentially supplied to the first scan line S1 to the *n*th scan line Sn. The left data signals LD are

supplied to the data lines D1 to Dm in synchronization with the scan signals. When the scan signals are sequentially supplied to the scan lines S1 to Sn, the first transistors M1 included in the pixels 146 in units of horizontal lines are turned on. At this time, the left data signals LD from the data lines D1 to Dm are supplied to the first nodes N1 through the first transistors M1. Then, the first capacitor C1 included in the pixels 146 charge the voltages corresponding to the left data signals LD.

By way of summation and review, shutter glasses receive light from a left glass in the first frame among four frames and receive light from a right glass in the third frame. At this time, the person who wears the shutter glasses recognizes the 3D image supplied through the shutter glasses. The black image displayed in the second frame and the fourth frame prevents a left image and a right image from being mixed with each other. If the left image and the right image are mixed, crosstalk may be generated.

In order to have the four frames included in the period of 16.6 ms, the organic light emitting display must be driven at the driving frequency of 240 Hz. When the organic light emitting display is driven at a high frequency, power consumption increases, stability deteriorates, and manufacturing cost increases.

Circumventing such situations, present embodiments are directed to a pixel capable of being driven at a low driving frequency, and an organic light emitting display using the same.

In the pixel according to present embodiments and the organic light emitting display using the same, the pixels emit light and the data signals may be simultaneously charged so that the organic light emitting display may realize the 3D image while being driven at the low driving frequency.

Example embodiments have been disclosed herein, and although specific terms are employed, they are used and are to be interpreted in a generic and descriptive sense only and not for purpose of limitation.

What is claimed is:

1. A pixel, comprising:
 - an organic light emitting diode (OLED) including a first electrode coupled to a second power source;
 - a first transistor coupled between a data line and a first node;
 - a second transistor including a first electrode, a second electrode and a gate electrode, the second transistor to drive the OLED with a current based on a voltage level of the gate electrode of the second transistor;
 - a third transistor coupled between the first node and the first electrode of the second transistor;
 - a fourth transistor coupled between the gate electrode of the second transistor and an initial power source;
 - a fifth transistor coupled between the second electrode of the second transistor and the gate electrode of the second transistor;
 - a sixth transistor coupled between the first electrode of the second transistor and a first power source;
 - a seventh transistor coupled between the second electrode of the second transistor and the OLED;
 - a first capacitor coupled between the first node and a third power source; and
 - a second capacitor coupled between the gate electrode of the second transistor and the first power source, wherein
- when the first capacitor is charged with a data signal from the data line, the first transistor is turned on such that the data line is electrically connected to the first node

and the third transistor is turned off such that the second transistor is electrically disconnected from the first node.

2. The pixel as claimed in claim 1, wherein the first transistor is turned on when a scan signal is supplied to a scan line.

3. The pixel as claimed in claim 2, wherein the third transistor is turned on before the first transistor is turned on in a frame.

4. The pixel as claimed in claim 3, wherein the fifth transistor is simultaneously turned on and off with the third transistor.

5. The pixel as claimed in claim 3, wherein the fourth transistor is turned on before the third transistor is turned on in the frame.

6. The pixel as claimed in claim 5, wherein the sixth transistor is turned off when the third transistor and the fourth transistor are turned on in the frame.

7. The pixel as claimed in claim 6, wherein the seventh transistor is simultaneously turned on and off with the sixth transistor.

8. The pixel as claimed in claim 1, wherein the third power source is the first power source or the initial power source.

9. The pixel as claimed in claim 1, wherein the second transistor is diode-connected when the fifth transistor is turned on.

10. An organic light emitting display, comprising:

- a scan line;
- a data line;
- a first control line;
- a second control line;
- an emission control line; and
- a pixel coupled to the scan line, the data line, the first control line, the second control line, and the emission control line,

wherein the pixel includes:

- an organic light emitting diode (OLED) including a first electrode coupled to a second power source;
- a first transistor coupled between the data line and a first node;
- a second transistor including a first electrode, a second electrode and a gate electrode, the second transistor to drive the OLED with a current based on a voltage level of the gate electrode of the second transistor;
- a third transistor coupled between the first node and the first electrode of the second transistor;
- a fourth transistor coupled between the gate electrode of the second transistor and an initial power source;
- a fifth transistor coupled between the second electrode of the second transistor and the gate electrode of the second transistor;
- a sixth transistor coupled between the first electrode of the second transistor and a first power source;
- a seventh transistor coupled between the second electrode of the second transistor and the OLED;
- a first capacitor coupled between the first node and a third power source; and
- a second capacitor coupled between the gate electrode of the second transistor and the first power source, wherein

when the first capacitor is charged with a data signal from the data line, the first transistor is turned on such that the data line is electrically connected to the first node and the third transistor is turned off such that the second transistor is electrically disconnected from the first node.

11

11. The organic light emitting display as claimed in claim 10, wherein the scan line is coupled to a gate electrode of the first transistor, and wherein the first transistor is turned on when a scan signal is supplied to the scan line. 5
12. The organic light emitting display as claimed in claim 11, wherein the first control line is coupled to a gate electrode of the fourth transistor, and wherein the fourth transistor is turned on when a first control signal is supplied to the first control line. 10
13. The organic light emitting display as claimed in claim 12, wherein the second control line is coupled to a gate electrode of the third transistor and a gate electrode of the fifth transistor, and wherein the third transistor and the fifth transistor are turned on when a second control signal is supplied to the second control line. 15
14. The organic light emitting display as claimed in claim 13, wherein the emission control line is coupled to a gate electrode of the sixth transistor and a gate electrode of the seventh transistor, and wherein the sixth transistor and the seventh transistor are turned off when an emission control signal is supplied to the emission control line. 20
15. The organic light emitting display as claimed in claim 14, wherein the first control signal is supplied to the first control line before the second control signal is supplied to the second control line in a frame. 25
16. The organic light emitting display as claimed in claim 15, wherein the emission control signal overlaps the first control signal and the second control signal. 30
17. The organic light emitting display as claimed in claim 10, wherein the third power source is the first power source or the initial power source. 35
18. A pixel, comprising:
 an organic light emitting diode (OLED) with a first electrode coupled to a second power source;
 a first transistor with a first electrode coupled to a data line, and with a second electrode coupled to a first node, the first transistor being turned on when a scan signal is supplied to a scan line;
 a first capacitor coupled between the first node and a third power source, the first capacitor to charge a first capacitor voltage corresponding to a data signal supplied from the data line;
 a second capacitor coupled between a second node and a first power source, the second capacitor to charge a second capacitor voltage according to the first capacitor voltage charged in the first capacitor;
 a second transistor to drive the OLED to flow current corresponding to the second capacitor voltage charged in the second capacitor through the OLED, the second

12

- transistor coupled between the first power source and a second electrode of the OLED and having a gate electrode connected to the second node;
 a third transistor coupled between the first node and a first electrode of the second transistor;
 a fourth transistor coupled between the gate electrode of the second transistor and an initial power source and turned on before the third transistor is turned on; and
 a fifth transistor coupled between a second electrode of the second transistor and the gate electrode of the second transistor and simultaneously turned on and off with the third transistor;
 wherein when the first capacitor voltage corresponding to the data signal is charged in the first capacitor, the first transistor is turned on such that the data line is electrically connected to the first node and the third transistor is turned off such that the second transistor is electrically disconnected from the first node. 5
19. The pixel as claimed in claim 18, wherein the third transistor is turned on before the first transistor is turned on in a frame. 10
20. The pixel as claimed in claim 18, further comprising:
 a sixth transistor coupled between the first electrode of the second transistor and the first power source and turned off when the third transistor and the fourth transistor are turned on in the frame and turned on in other periods; and
 a seventh transistor coupled between the second electrode of the second transistor and the OLED and simultaneously turned on and off with the sixth transistor. 15
21. A pixel, comprising:
 an organic light emitting diode (OLED) including a first electrode coupled to a second power source;
 a first transistor coupled between a data line and a first node;
 a second transistor including a first electrode, a second electrode and a gate electrode;
 a third transistor coupled between the first node and the first electrode of the second transistor;
 a fourth transistor coupled between the gate electrode of the second transistor and an initial power source;
 a fifth transistor directly coupled between the second electrode of the second transistor and the gate electrode of the second transistor;
 a sixth transistor directly coupled between the first electrode of the second transistor and a first power source;
 a seventh transistor coupled between the second electrode of the second transistor and the OLED;
 a first capacitor coupled between the first node and a third power source; and
 a second capacitor coupled between the gate electrode of the second transistor and the first power source. 20

* * * * *

专利名称(译)	使用其的像素和有机发光显示器		
公开(公告)号	US9747838	公开(公告)日	2017-08-29
申请号	US15/051715	申请日	2016-02-24
[标]申请(专利权)人(译)	三星显示有限公司		
申请(专利权)人(译)	三星DISPLAY CO. , LTD.		
当前申请(专利权)人(译)	三星DISPLAY CO. , LTD.		
[标]发明人	KANG CHUL KYU		
发明人	KANG, CHUL-KYU		
IPC分类号	G09G3/325 G09G3/00 G09G3/3233 G09G3/3266		
CPC分类号	G09G3/325 G09G3/003 G09G3/3233 G09G3/3266 G09G2300/0426 G09G2300/0439 G09G2300/0809 G09G2300/0852 G09G2300/0861 G09G2310/08 G09G2330/00		
审查员(译)	DAVIS , TONY		
优先权	1020100109850 2010-11-05 KR		
其他公开文献	US20160171927A1		
外部链接	Espacenet USPTO		

摘要(译)

像素可包括：有机发光二极管（OLED），其阴极电极耦合到第二电源；第一晶体管，其中第一电极耦合到数据线，第二电极耦合到第一节点，第一晶体管是当扫描信号被提供给扫描线时，第一电容器连接在第一节点和第三电源之间，以对应于从数据线提供的数据信号对应的第一电容器电压，以及由第一电容器电压通过OLED提供对应于从第一电源到第二电源的充电的第一电源电压的电流。

